

Physical Education:

PE lessons will take place on Tuesdays and Fridays.. All children must keep their PE kit in school. Full PE kit consists of: white T-shirt/polo shirt, black shorts/joggers/leggings, and trainers or pumps. In Autumn 1 we will cover cheer and ball skills, in Autumn 2 we will cover Gymnastics and Ball skills.



Homework

Each half term, a 'menu' style homework sheet will be stuck in your child's homework book containing 6-8 homework tasks. Please select **one** to complete per week. Please return your

homework book each week by **Wednesday** at the latest, so your child's teacher can mark their book ready to be sent home again on **Friday**. We have also set all pupils up with a log in for the online learning platform, IXL. Please log in at home on: <https://uk.ixl.com/> and have a go at the tasks set by your teacher.

Reading & Phonics

Phonics sessions are taught daily across KS1 using our Little Wandle Letters and Sounds programme. Information and resources for parents can be found here:

<https://www.littlewandlelettersandsounds.org.uk/resources/for-parents/>

Any children who need additional support with this are given targeted intervention sessions to help them keep up. We also teach class reading sessions which focus on comprehension. We aim to expand children's inference, prediction and retrieval skills as well as developing their understanding of vocabulary. You can help this at home by reading with your child daily & asking your child questions about what they have read. We will listen to your child read in school and provide them with a reading book matched to their phonics level. Each half term, we will carry out a 1-1 reading assessment with your child to determine if they are ready to move to the next phase. We will keep you informed of this progress.

In Year 2, children will continue to be in phonics reading groups and will move towards Y2 fluency groups.

Thank you for your continued support!

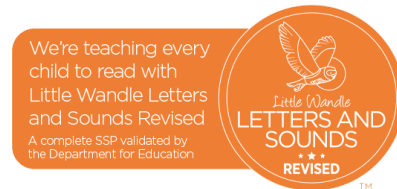
Aston Hall Junior & Infants

Curriculum Booklet for Parents



Aston Hall
Junior & Infant School

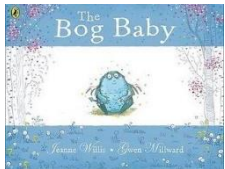
KS1 Autumn Term 2024



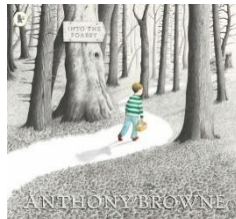
Maths:

We will start by focusing on place value. Children will learn to count, read and write numbers in numerals and words, and represent numbers using apparatus such as Base 10, tens frames and Numicon. We will use part-whole models, bar models and place value charts to help us understand how many tens and ones make up a number. Then, we will move on to addition and subtraction where children will use a variety of methods to add, subtract, solve problems and look at the inverse. During this term, children will be taught to use the symbols < . > and = to compare numbers.

English Novel Study:



Our English lessons are taught through the stimulus of a high-quality, carefully-selected novel study text. Our first text is 'The Bog Baby' by Jeanne Willis which has themes of responsibility, secrets, love and the natural



world. This book will provide a learning hook for some super writing in our English lessons. After half term we will move on to 'Into the Forest' by the famous author Anthony Browne. This book has wonderful illustrations with fascinating fairy tale twists. We can't wait to explore these stories with your children!

Science:

In Science we will be learning about Animals including Humans. Y1s will learn about parts of the human body and explore what humans need to survive. After half term Y1s will learn to name, describe and classify animals and look at their habitats and diets. Y2s will also look at different food groups and learn the names of the human internal organs. After half term Y2s will also closely explore habitats, micro-habitats and food chains..

Jigsaw (PSHE):

We will begin with our 'Being Me in My World' unit, where we will consider our rights and responsibilities. Then we will move to our second unit 'Celebrating Difference' where we will learn to embrace peoples' uniqueness. We will also learn about healthy friendships and what bullying is.



Religion, Ethics and Philosophy:

Initially we will look at belonging and how people belong to communities, clubs, groups and religions. We will move on to learning about Islam and Christianity. We will learn about the importance of prayer and places of worship in these major religions.

History/Geography:

We will begin our Geography learning focusing on our local area and our school. We will create maps of school using symbols and a key and look at the physical and human features. We will also learn about the four countries of the UK, their capital cities and the seas surrounding the UK. In history, we will learn about the history of schools – beginning with the history of our own school. We are fortunate to be hosting a parent visitor on Monday 23rd September who will be talking about memories of Aston Hall from the past. If you went to Aston Hall as a child, it would be amazing if you could share any old photographs so we can compare the past to the present.

Visits

Harvest Festival Celebrations

We will be celebrating Harvest Festival at Central Methodist Church on Lodge Lane on Wednesday 16th October. The children have been busy practising some Harvest songs and each class will prepare something to perform at the church.

Local Woodland Walk

As part of our geography fieldwork and our fairy tales topic in English, we will be going on a walk to the woods around Aston.

Wednesday 6th November – Y2

Thursday 7th November – Y1

Pantomime Trip & Christmas

Performance

On Tuesday 10th December we will have a visit from Chaplins Panto. We are also excited to say that in Autumn 2 we will begin rehearsing for our KS1 Christmas production! We will perform on Thursday 12th December in the afternoon and evening.